



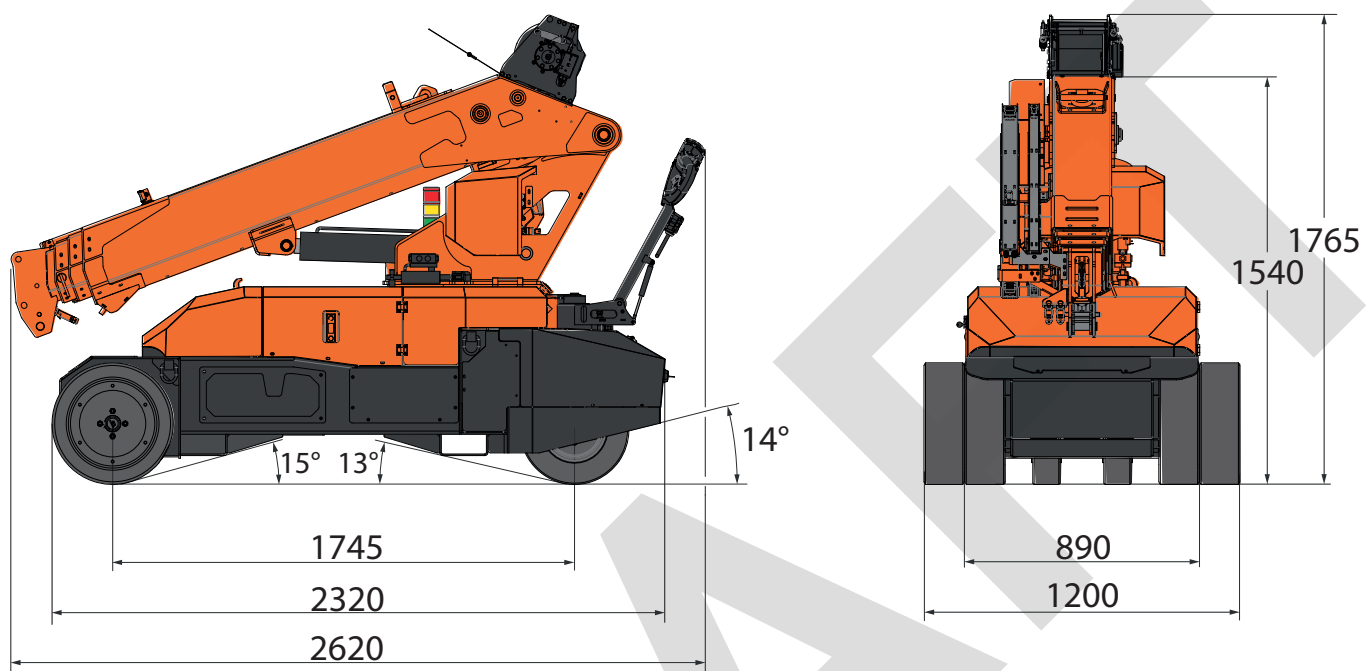
Technical Data
Specification & Capacities

MPK20R
Draft

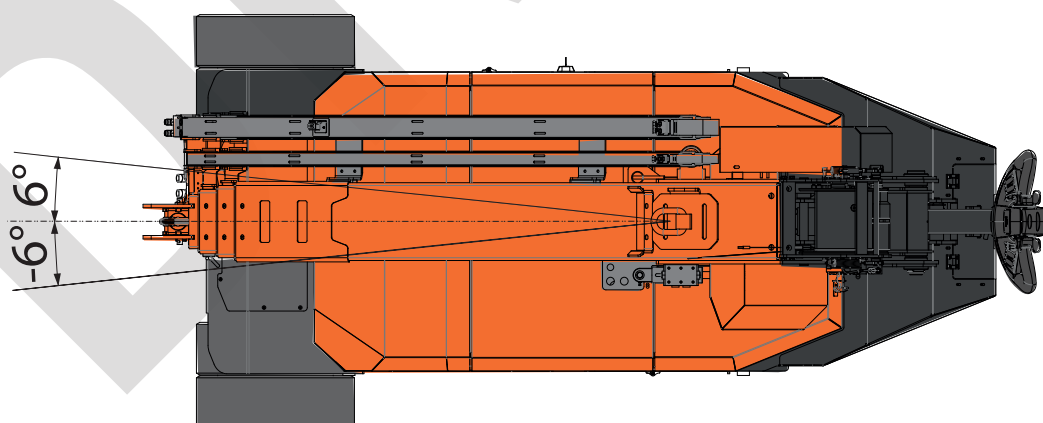
DRAFT

OVERALL DIMENSIONS

MPK20R
















BOOM SWING



[mm]

OVERALL INFORMATION

	NAME		DESCRIPTIONS	U.M	VALUE
CRANE INFO		OVERALL DIMENSIONS	Height	mm	1.765
			Length		2.620
			Width		1.200
		BOOM	Length	m	2,2 - 6,2
			Speed	s	25
		SLEWING	Angle	°	-6°/6°
			Speed	rpm	-
		LIFTING	Working Angle	°	-20°/60°
			Speed	s	20*
			Max Capacity	kg	2.000
			Back Wheel Max Load	kg	1.100†
			Front Wheel Max Load		1.980‡
		Travel Speed	km/h	-	
		Gradeability	°	13	
		Working Temperature	°C	-20°/+40°	
WEIGHTS		CRANE	MPK20R	kg	1.452§
		COUNTERWEIGHT	CW	kg	500
		CRANE	Total weight	kg	1952
ACCESSORIES		JIB	JIB 1000.GX	kg	18
		GLASS MANIPULATOR	JVM10EV	kg	165
			JVM06EV	kg	110
ENGINE		ELECTRIC	Voltage	V	24
			Power	kW	3


*: Reference Angle 0-50°

†: Without Load

‡: Static lifting. Max column slewing

§: Dry weight

OVERALL INFORMATIONS

HYDRAULIC SYSTEM		Working Pressure		bar	180	
		Tank Capacity		L	31	
		OIL	Type		Synthetic	ISO 6743-4:HFDU
					Biodegradable	ISO VG46
		Viscosity Grade		VG	46	
		MAIN PUMP	Displacement		cm ³ /rev	6,4
			Max Oil Flow		L/min	9,1

CRANE PERFORMANCE

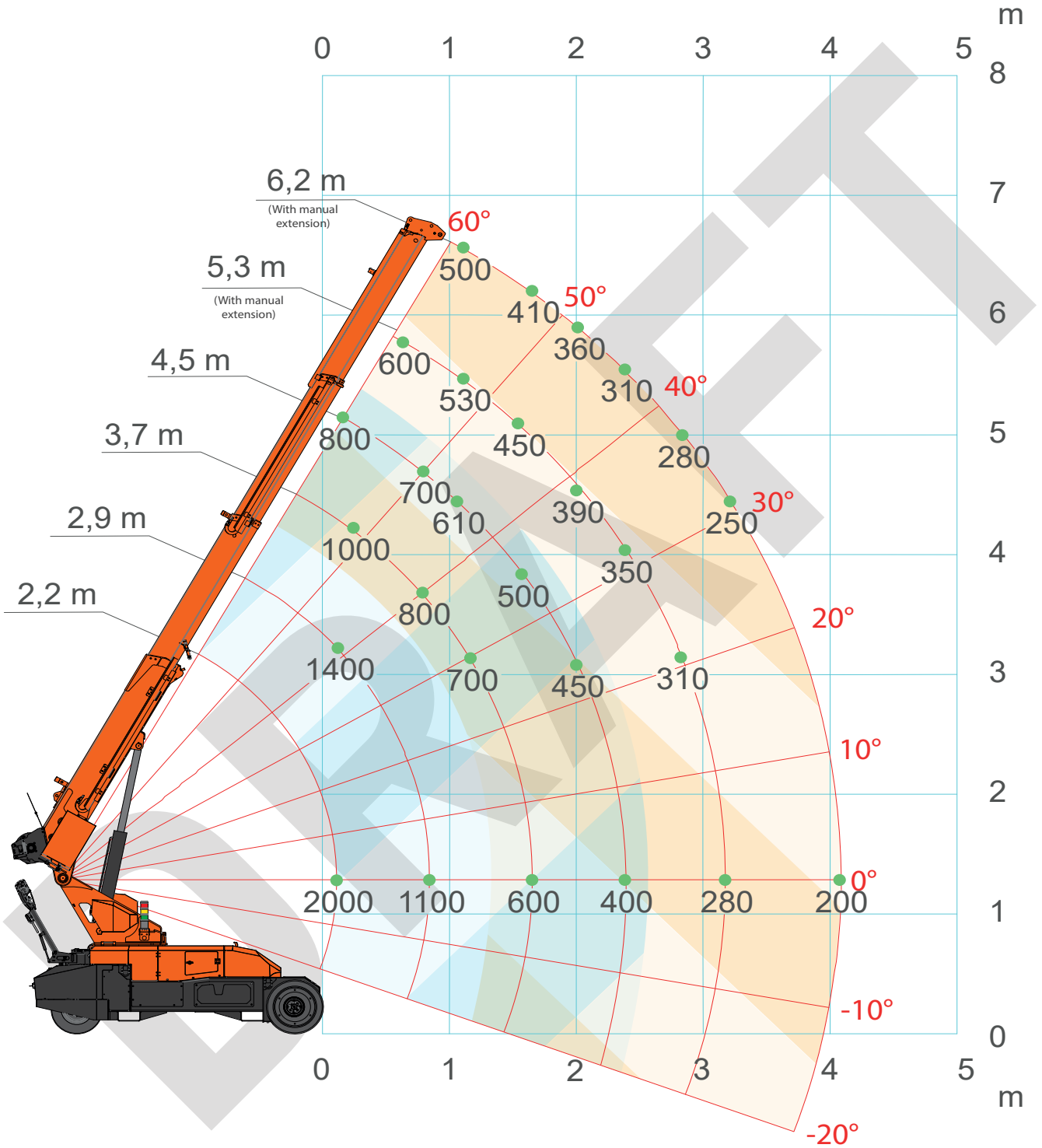
STANDARD WINCH	Layer	Max pull line	Standard rope speed
		kg	m/min
	1	1.000*	37
	2	920*	41
	3	850*	45
	4	790*	49
	5	730*	53
ROPE	Wire rope	Max load	Total length
		kg	m
	19x7 right non rotating lang lay	2.086	7

HOOK BLOCK	Block type	Weight	Load	N° of	
		kg	kg	Sheaves	Lines
	Single pulley block	24		2.100	1
1.400				1	2
Overhaul Ball	40	700	-	-	1

*: LMI limited at 700 kg

MPK20R - MAIN BOOM

HOOK configuration



MAIN BOOM



MANUAL EXTENSION

MPK20R - MAIN BOOM

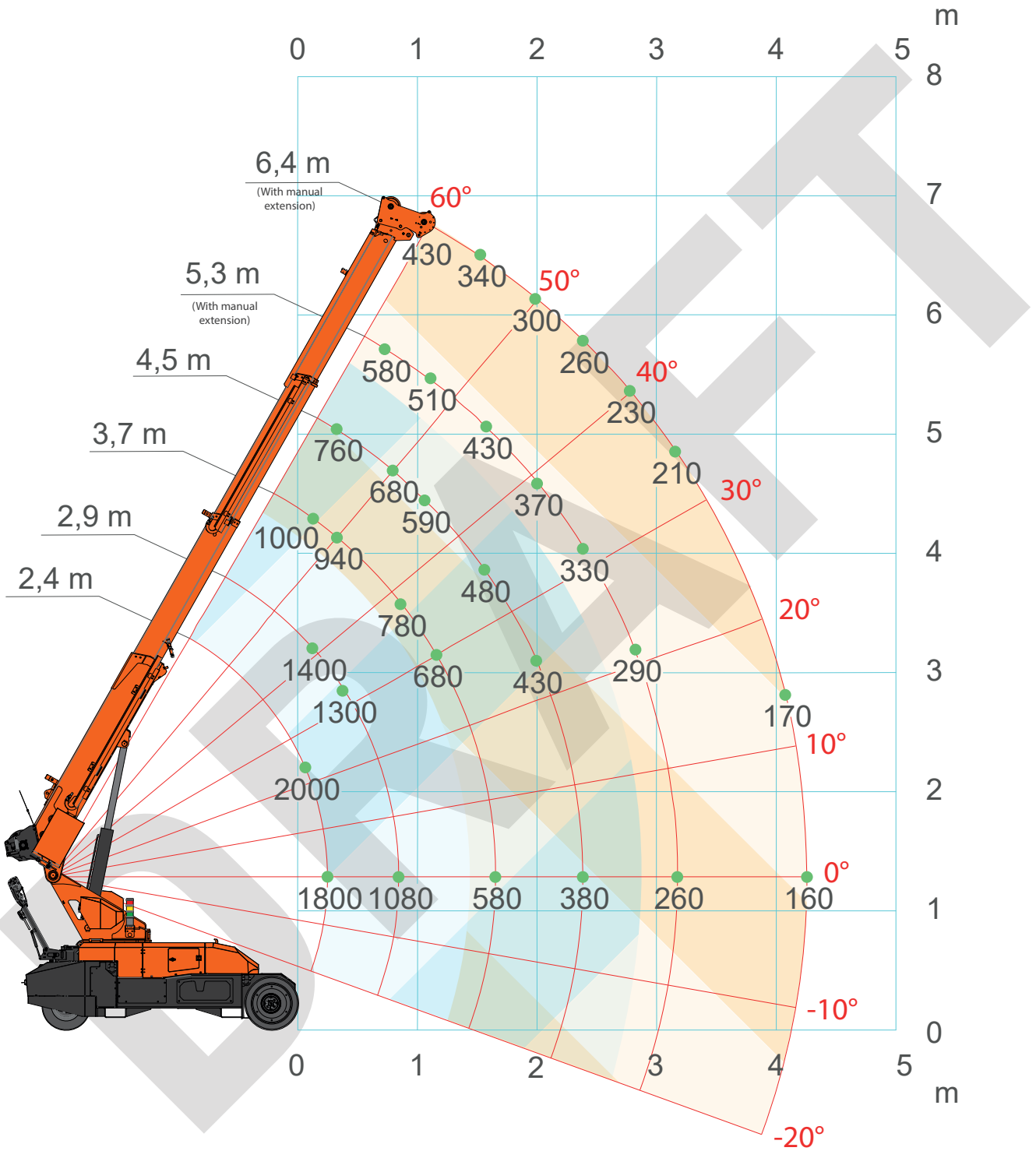
HOOK configuration

CRANE PERFORMANCE									
L (m) →	2,2	2,9	3,2	3,7	4,1	4,5	4,9	5,3	6,2
0,1	2.000	1400	1250	1.000	900	800			
0,8		1100	950	800	750	700	650	600	
1,1			850	700	650	610	580	530	500
1,6				600	550	500	480	450	410
2,0					490	450	410	390	360
2,4						400	360	350	310
2,8							330	310	280
3,2								280	250
4,1									200
↑S (m)	kg								

DRAFT

MPK20R - MAIN BOOM

WINCH configuration



MAIN BOOM



MANUAL EXTENSION

[kg]

MPK20R - MAIN BOOM

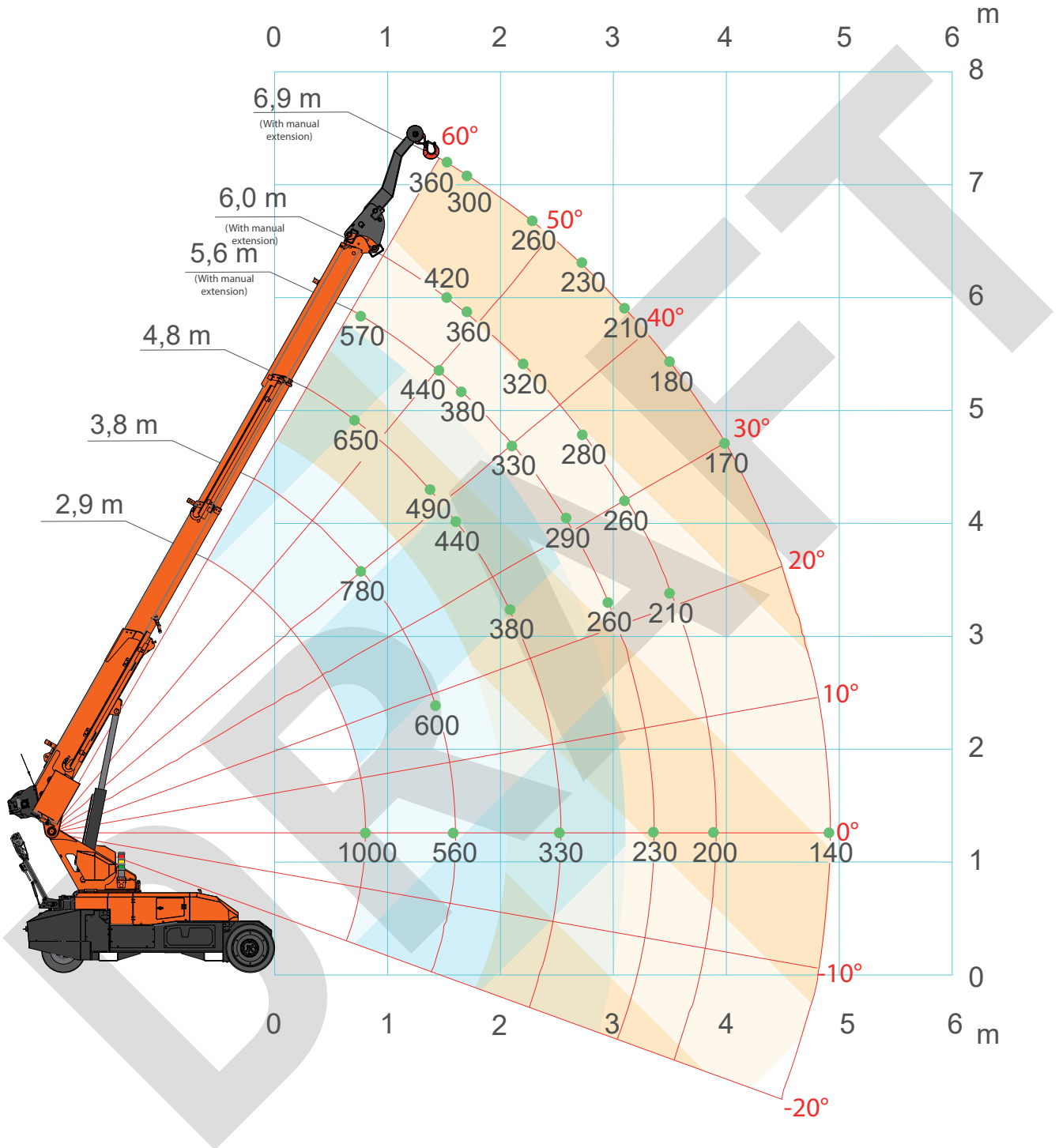
WINCH configuration

CRANE PERFORMANCE										
L (m) →	2,2	2,9	3,2	3,7	4,1	4,5	4,9	5,3	6,2	6,4
0,1	2000	1400	1230	1000	900					
0,3	1800	1300	1150	940	850	760				
0,8		1080	930	780	730	680	630	580		
1,1			830	680	630	590	560	510	480	430
1,6				580	530	480	460	430	390	340
2,0					470	430	390	370	340	300
2,4						380	340	330	290	260
2,8							310	290	260	230
3,2								260	230	210
4,1									180	170
4,3										160
↑S (m)	kg									

DRY

MPK20R - JIB 1000.GX

H00K configuration



MAIN BOOM



MANUAL EXTENSION

[kg]

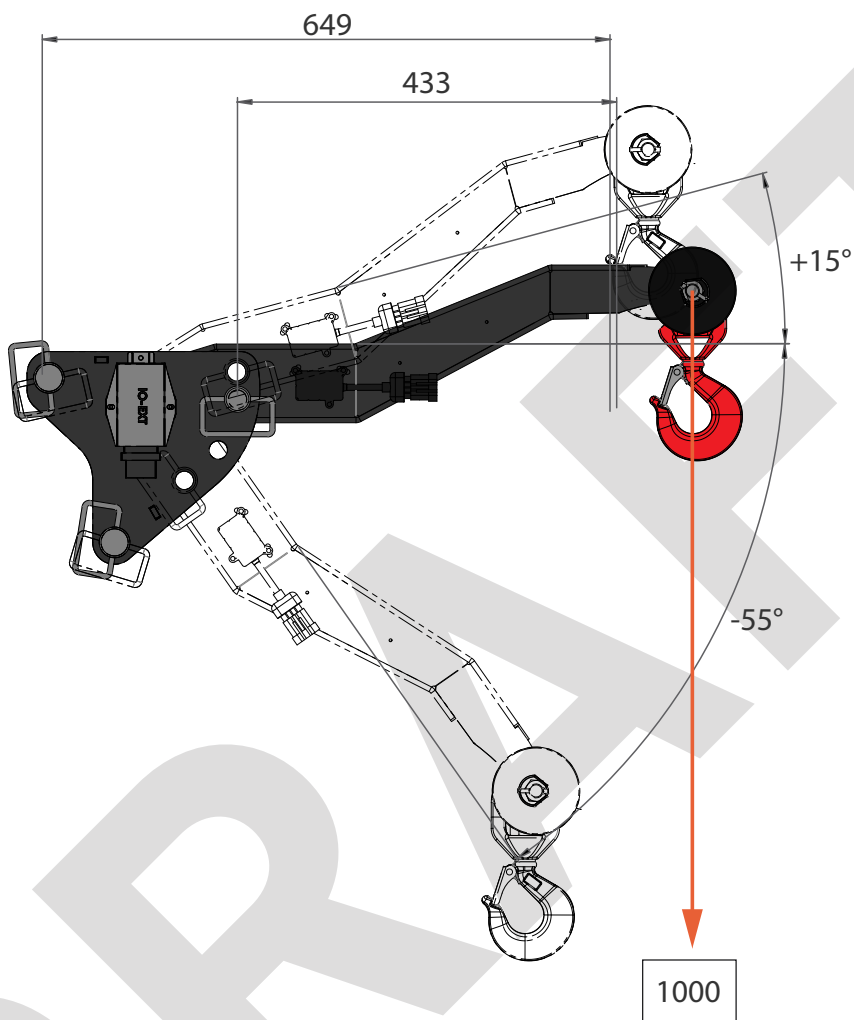
MPK20R - JIB 1000.GX

HOOK configuration

CRANE PERFORMANCE									
L (m) →	2,9	3,6	3,8	4,3	4,8	5,2	5,6	6,0	6,9
0,8	1000	820	780	710	650	600	570		
1,5		640	600	530	490	460	440	420	360
1,7			560	490	440	400	380	360	300
2,2				430	380	350	330	320	260
2,7					330	310	290	280	230
3,1						280	260	260	210
3,5							230	210	180
3,9								200	170
4,8									140
↑S (m)	kg								

DRAFT
















ACCESSORIES FEATURES JIB1000.GX



	JIB	JIB1000.GX	kg	18
---	-----	------------	----	----

DRAFT

SYMBOLS

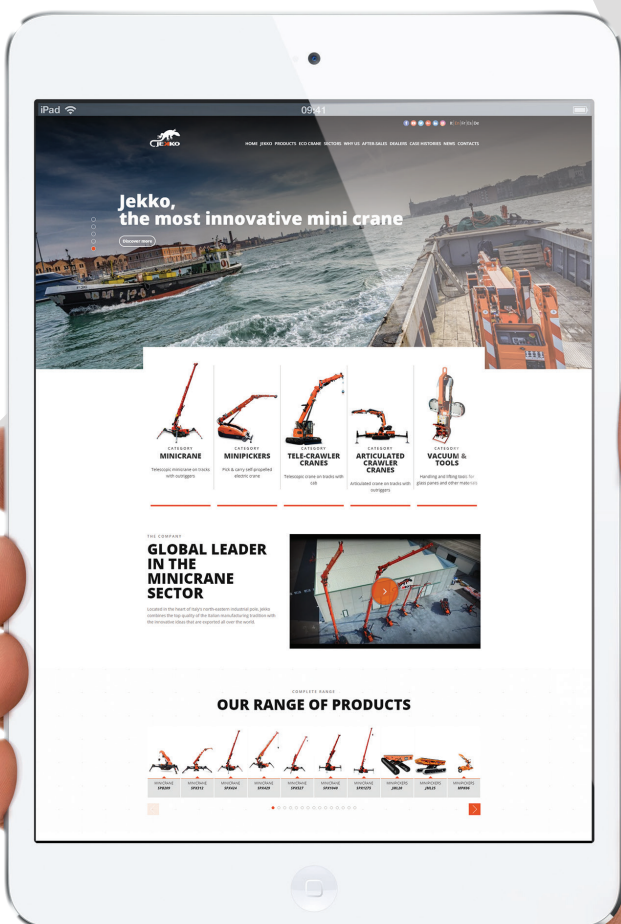
	Weight		Electric Engine		Minipicker		Boom Angle
	Max Capacity		Hydraulic Oil		Back Wheel Loading Point		Boom Length
	Gradeability		Working Temperature		Front Wheel Loading Point		Slewing
	Jib		Glass Manipulator		Travel Speed		

REMARKS REFERRING TO LOAD CHART

- The load charts are calculated according to EN 13000.
- For the calculation of the load charts at least a wind speed of 9m/s (33km/h) and regarding the load a sail area of 1m² per ton load and a wind resistance coefficient of 1.2 on the load have been taken into account. For lifting of loads with large sail areas and/or high wind resistance coefficients the maximum wind speed as stated in the load charts has to be reduced.
- Lifting capacities are given in kilograms.
- The weight of the hook blocks and hooks is part of the load and therefore it must be deducted from the lifting capacities.
- Working radii are measured from the slewing centre.
- The lifting capacities given for the telescopic boom apply if the folding jib is removed.
- Subject to modification of lifting capacities.

YOUR JEKKO DEALER

EN All specifications and features herein described can be changed without prior advice. All indicated data are indicative only and are not binding as crane performs differently depending on its use. **IT** Tutte le caratteristiche e le specifiche descritte possono essere soggette a variazioni senza preavviso. Tutti i dati riportati sono forniti a puro titolo informativo e non sono impegnativi dal momento che le prestazioni della macchina variano in funzione dell'utilizzo. **DE** Unangekündigte Änderungen sämtlicher Eigenschaften und Daten sind möglich. Alle Angaben sind Richtwerte und nicht verbindlich da die Leistungen der Vorrichtung von deren Einsatz abhängen. **ES** Todas las características y las especificaciones aquí indicadas pueden ser sujetas a variaciones sin aviso. Se dan todos los datos aquí indicados como simples informaciones. No se consideran como vinculantes, dado que las prestaciones del maquinario pueden variar. **FR** Toutes les caractéristiques et le spécifications descriptives peut être sujet à variation sans préavis. Tout les données rapportés sont fournis à titre informatif et ne sont pas engager au moment que la prestation de la machine change en fonction de l'emploi.



www.jekko-cranes.com

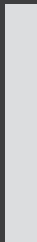
Visit jekko-cranes.com to keep in contact with us, discover all the latest news and find out technical details of all our products.



Jekko s.r.l.

Via Campardone, 1 - 31014 Colle Umberto (TV) - Italy
info@jekko.it - www.jekko-cranes.com

SERIAL NUMBER:



09.05.2022 | Rev.0